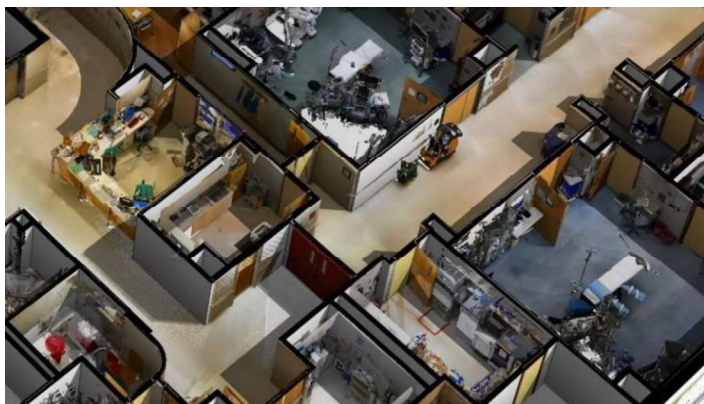


Montefiore is implementing a new Enterprise Asset Management (EAM) system. The goal is to provide a single source of truth for Montefiore's building spaces, clinical, and engineering assets to enable our vision of being a premier academic health system with state-of-the-art facilities.

Our partners, FSI and Enstoa, will be onsite July 24 – August 11, 2023 and September 25 – October 27, 2023 to complete work that enables the new technology system.

What is happening?

We are capturing 3D models of our physical workspaces and tagging our engineering assets with QR codes. This information will be used to ensure accurate data in our new technology system.



How does this impact me?

- You will see our partners, FSI and Enstoa, walking around the building.
- You can identify them by:
 - Clothing labeled "FSI" or dark vest labeled "Enstoa"
 - Room scanning equipment marked "Enstoa"
 - Standard Montefiore Vendor ID
- You will see stickers with arrows on the floor. Please do not remove them. These are used to position the machine that does the room scanning.
- Every effort is made to scan rooms when they are unoccupied. If, however, you happen to be present, you may be asked to move out of a room or space to allow the team to quickly complete their work (takes under 5 minutes).
- Your privacy will be protected throughout the process including faces blurred during room scanning. Clinical staff: please turn off computer monitors and close paper files.



Why is Montefiore doing this?

Our top priority is always patient safety. The new Enterprise Asset Management system will help us maintain our equipment and assets to ensure they are reliable, readily available and functioning as expected so patients continue to receive the care they need, when they need it.

What tools are used in workspace scanning?

The scanning equipment is a dolly that is fitted with cameras and lasers to absorb the physical environment digitally as it is rolled through the facility.

Is the tool safe?

The equipment uses a class 1 laser. This type of laser is eye-safe under all operating conditions and does not exceed the Maximum Permissible Exposure (MPE) during scanning.

If you have additional questions, please reach out to Engineering Director, Roy Ackerman:
ackermanr@montefiorenyack.org.